



February 1, 2020

Volume 29, Issue 2

Wildflower Quilt Guild Newsletter

UPCOMING EVENTS

- 2/5 **We Care Bee at Covenant Lutheran Church**
- 2/11 **Board of Directors meeting at Grace Presbyterian Church**
- 2/18 **January Quilt Guild Meeting at FUMC in the Family Life Bldg.**
- 2/19 & 2/26 **Free motion quilting workshop at Covenant Lutheran Church**

LETTER FROM THE PRESIDENT

I hope you had a very productive January. It was the beginning of a new year and (depending on your opinion) maybe the beginning of a new decade. Every January, I always want to start putting my quilting life back in order. I make new lists of UFOs, orphans, and things I want to do. And then this year, cedar fever set in and nothing happened except non-stop coughing, snorting, and wheezing. Luckily, all those things I planned to do are still sitting everywhere in my field of vision taunting me so I don't have to dig them out. I just have to figure out where to put them all away. Oh well, I have 11 more months before I need to dig them back out to make new lists. Maybe I'll make a little progress during that time.

Happy Quilting, Cindy Moore, President





PROGRAM INFORMATION

In February, Lisa Martin will give a program on machine quilting your quilts using your domestic sewing machine. Workshops will be held Wednesday, February 19th and 26th.

The March program features Kim Gaddy of Tiny Cottage Quilts and another member of our guild. Kim will trunk show her quilts and will also do a workshop on the following Wednesday teaching her appliqué method.

2020 MEMBERSHIP DRIVE CONTINUES

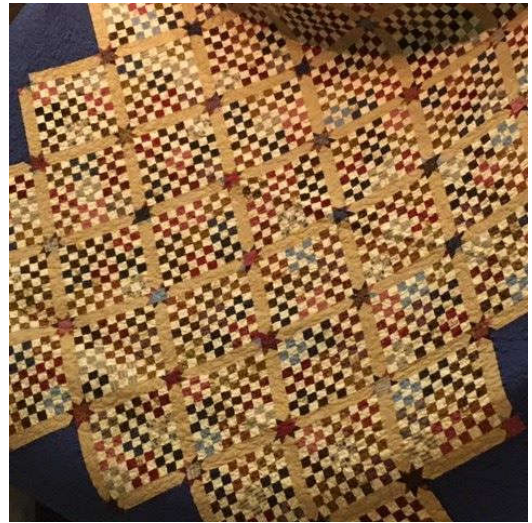
About two thirds of guild members have already renewed their membership for 2020, and there is still time for those of you who haven't. As long as you renew before March 1st your name will be included in our Annual Yearbook, which lists all members names, addresses, and phone numbers, and you will be kept on our email list. Just see me at February's guild meeting to fill out your new membership form and pay your yearly fee of \$30. Our Yearbook will be available to all members at the March guild meeting.

Lisa Martin, Membership Director

OFFICERS NEEDED

Two wonderful members, Janet Mezger and Denise Farquhar, have agreed to be on a 2nd Vice President committee but they would like one or two more members to help out to plan programs for 2021. Janet has even agreed to represent the position on the Board of Directors.

Barbara Gray did an amazing job as Secretary during 2019 and told us she did not think she could not commit to the whole year of 2020 but was willing to start the year and see how it goes. Now she has decided she needs to go ahead and resign so we need to fill the Secretary position. Pam South had agreed to try the position and we are happy to have her but if she should decide she is not a fit for the position, we would need someone else. If you can help with either of these positions, please contact [Cindy M.](#)



FEBRUARY REFRESHMENTS

The refreshment team for February will be the Claremont Girls and members who are not in a bee with last name A - C.

BAG IT!



“Oh, no, not again!” I can hear your shouts of excitement thinking this article is only going to repeat what you’ve heard before and before. Nope, this is the last time I will explain my **BAG IT** systematic way of organizing paraphernalia to take to Guild. However, as new items become dates on my calendar, I will share. *Thank you tremendously* for your food contributions in January. Please read more about this area of need from Jamie Williams, Community Director, and then **Bag It!**

1st Mo. start with a clean working space by clearing away those scraps from completed projects and put

your scissors where they belong.

2nd Mo. is **BLOCK OF THE MONTH** with Coordinator Cindy Peterson who has designed a spool of thread called **Quilters Candy** for February. Make 2 blocks (1/self, 1/WQG) of any color. *Pattern is in this newsletter.* Cindy showed how adorable they will look when sewn together with January's mitten. **Bag it!**

3rd Mo. is CHALLENGE QUILTS, in (2) categories. News Editor Sarah will print the full details toward the back of this newsletter.

3rd Mo. will also be a **UFO (Un-Finished Objects)** day to find the unfinished, evaluate the length of time to complete it, and sign the dotted line under your category. Coordinator Betty Sodek will give you the UFO form with details and completion dates. However, don't wait. Give her a call (# in WQG directory) and get started.

3rd Mo. will involve no sewing, but a quick gathering of (2 dozen six-inch) **CHARM SQUARES** to trade is Coordinator Carol Durisko's goal. **Bag them for Feb. 18.**

February green, any shade, print or solid as long as green is predominate color

March aqua, any shade but only solids

April white on white fabric



1st Tu. is a day of replenishing.

BIRTHDAY FABRIC with Coordinator Martha Smith

And ~ a **surprise** for my **SECRET PAL** with Coordinator Judy McMahon.

2nd Tu. Is **'YOUR' BLOCK OF THE MONTH.** Get your white 6 ½ inch piece of fabric for the background coupled with a **Sweet Blossoms** quilt pattern from Coordinator Stacy Clady.

1st Wed. **ROUND ROBIN GROUPS** will kick off in March with Michelle Weller. Keep on the email lookout for details.



Look for special articles from Community Coordinator Jamie Williams and her **DONATION QUILTS.** Become involved with **QUILTS OF VALOR** and Coordinator Stacy Clady.

Vickie Morgan, Activities Director

FEBRUARY BIRTHDAYS

Jan Rogers	Feb 3
Kay Hartley	Feb 15
Sandra Marquis	Feb 16

Karolyn Booth	Feb 18
Judy Enloe	Feb 18
Reeneea Schraeder	Feb 20
Pat Thompson	Feb 20
Meghan Masura	Feb 25

Happy Birthday!!

Birthday fabric winners for January were Birthday Girl: Jeanne Cunningham, Diane Henderson, Sarah Dauro (x2), Kay Lewis, Cindy Petersen, Pat Thompson, Charlotte Massey, Peggy Mathis, Erlene Fritz, Judy Enloe, Bev Crocker, Judy McMahon, and Betty Sodek.

JANUARY FINANCIAL STATEMENT

OPERATING ACCOUNT

Beginning Balance	\$26,423.50
Membership	990.00
We Care Bee	35.00
Charm Square Drawing	17.00
Birthday Fabric	10.00
V. Morgan (Christmas Party)	-666.90
J. Williams (Christmas Party)	-74.81
Net Income (Loss)	310.29
Ending Bank Balance	\$26,733.79

SHOW ACCOUNT

Beginning Balance	\$4,126.76
Net Income (Loss)	0.00
Ending Bank Balance	\$4,126.76

JANUARY DONATIONS

Chemo Quilts: 6
 Project Linus: 39
 Pillow cases: 16
 Hats: 15
 Bags: 3
 Scarves: 4

We are still taking donation bags. We now have an outlet for foster kids so think of them when you sew.

WE CARE BEE

The We Care Bee will meet on the first Wednesday in February. Please come on February 5 from 9 a.m. to 3 p.m. at Covenant Lutheran Church, 4202 Hickory, to make donation items for people in need. As always, we will have some new kits for you to choose from as well as fabric. Batting will also be

available. Plus, Stacy is bringing Christmas fabric to cut into pillowcase kits. If you would like to help, bring your cutting board, ruler and rotary cutter. Also, if you have appropriate fabric to cut into pillowcase kits, bring it too.

Several of our willing workers got together at the January meeting and made a top for our second Salvation Army quilt. We have enough blocks to make 3 more Salvation Army quilts but we will need some more willing workers to lay them out and sew them up.

UPCOMING QUILT SHOWS AND HOPS

Feb 1 & 2 – [A New Leaf](#) – Rockport-Fulton High School - Rockport

Feb 14 & 15 – [Once Upon a Time](#) – Rio Grande Valley Quilt Show, South Padre Island Conv. Center

Feb 14 & 15 – [Highland Lakes Quilt Festival](#) - Burnet

Feb 20-23 – [QuiltCon](#) – Austin Convention Center – Austin

Feb 21 & 22 – [Nature's Blessing](#) – Brenham

Feb 28 & 29 – [Best Little Quilt Show](#) - LaGrange

YEARBOOK

It's time to start working on the 2020 yearbook. We always include a page about our guild members who are willing to quilt for others, either for pay for personal quilts or for free for donation quilts. If you want to be included on this page, please contact [Cindy M.](#) and let her know.

WILDFLOWER CHALLENGE QUILTS OF 2020

1. The category of *Old Fashion Pattern or Self Created Quilt with a Twist*

- a. ***Due and voted on by the WQG members on June 16, 2020***
- b. Must be completed to include batting and quilted.
- c. Will range in size and yet as close to 50"x60" as possible.
- d. Choose (1) traditional block that must be used in (3) different sizes throughout the entire quilt

2. The category of *Old Fashion Pattern or Self Created Quilt with a Twist*

- a. ***Due and voted on by the WQG members on November 17, 2020***
- b. Must be completed to include batting and quilted.
- c. Will range in size and yet as close to 50"x60" as possible.
- d. Participants will use a group of (4) corresponding fat quarters that can be placed anyplace on the front of the quilt in addition to other fabric as needed.
 - i. One FQ will create (20) postage stamp size blocks. Note: measured 1.5 by 1.5 inches before seams.
 - ii. One FQ will create (20) two inch blocks
 - iii. One FQ will create (10) four inch blocks.
 - iv. One FQ will create (5) eight inch blocks.

=====

1. The category of Quilts of Art

A quilter's insight into art quilting techniques using dyes, paints, silkscreens, raw edge applique, paper-piecing, embellishments.

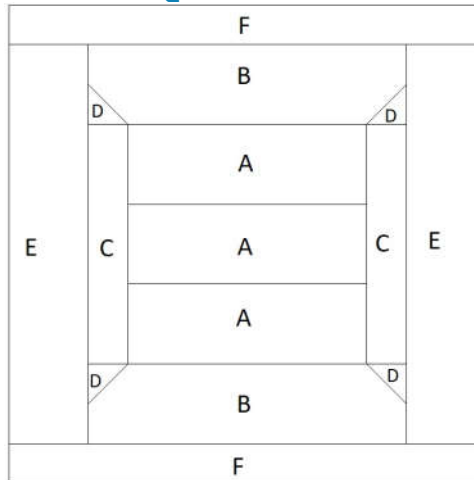
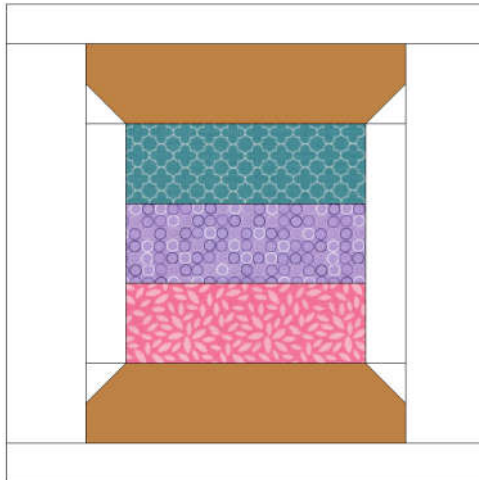
- a. **Due and voted on by the WQG members on May 19, 2020**
- b. Quilt must have outside dimension larger than 15"x 15"
- c. It must have a top, backing, and batting.
- d. Can be machine or hand quilted (not tied).
- e. Theme: Anything Goes! Use your favorite technique about your favorite subject (i.e. family, sport, hobby). Create as if you are not competing, just creating.

2. The category of Quilts of Art

OMBRE, the gradual blending of one color hue to another, usually moving tints and shades from light to dark.

- a. **Due and voted on by the WQG members on October 20, 2020**
- f. Quilt must have outside dimension of 30" x 30".
- g. It must have a top, backing, and batting.
- h. Can be machine or hand quilted (not tied).
- b. Theme: Stars. Use the blending art with fabric, threads, embellishments transforming stars with your imagination.

FEBRUARY BLOCK OF THE MONTH - QUILTER'S CANDY



Background - white

C: 2 pieces 1-1/2" x 6-1/2"

D: 4 pieces 1-1/2" squares

E: 2 pieces 2-1/2" x 10-1/2"

F: 2 pieces 1-1/2" x 12-1/2"

Thread

A: 2-1/2" x 6-1/2" use 3 coordinating fabrics

Spool

B: 2 pieces 2-1/2" x 8-1/2" brown, tan, gray, etc.

Sew 3 - A pieces together. Add piece C to each side of piece A.

Take D squares and snowball piece B on top corners. Add to top and bottom of thread piece.

Add piece E to sides of spool.

Add piece F to top and bottom.

*The **WILDFLOWER QUILT GUILD** is a non-profit organization dedicated to promoting the art of quilting and providing an opportunity for sharing ideas and learning new techniques.*

BOARD OF DIRECTORS AND COORDINATORS

President	Cindy Moore
Vice President	Karen Spencer
2 nd Vice President	Janet Mezger & Denise Farquhar
Secretary	Barbara Gray
Treasurer	Betty Sodek
Co-Treasurer	Sarah Dauro
Parliamentarian	Lynne McIver
Membership	Lisa Martin
Communications	Janice Forney
Facebook	Stacy Clady
Activities	Vickie Morgan
Community Service	Jamie Williams
Quilt Show	Deb Perrault
Sunshine/Shadows	Vickie Morgan
Scott & White Quilts	Lisa Martin
Block of the Month	Cindy Peterson
Quilter Pals	Judy McMahon
Challenges	Vickie Morgan
UFOs	Betty Sodek
Birthday Fabric	Martha Smith
Charm Squares	Carol Durisko
YOUR BOM	Stacy Clady
Quilts of Valor	Stacy Clady
Refreshments	Jan Rogers & Glenda Sager
FUMC Liaison	Mary Wenberg



WQG MEETINGS are held the third Tuesday of each month at First United Methodist Church in Temple.
102 N. 2nd St., Temple, TX

QUILT GUILD MEMBERSHIP is open to anyone interested in quilts or quilting. Annual dues are \$30, with special rates for Juniors. Members receive the Guild's newsletter, attend monthly meetings and special events and enjoy many other opportunities.

SUBMISSIONS to the newsletter are due the Friday after the monthly meeting.

Send submissions
to: sarah@handmadesaori.com